



House - Detached (EPC Rating: D)

52A HOLMEFIELD ROAD, LYTHAM ST  
ANNES, LANCASHIRE, FY8 1JY

PCM

£595 PCM



# 1 Bedroom House - Detached located in Lancashire

Welcome to Holmfield Road...

Nestled on Holmefield Road in the charming town of Lytham St. Annes, this delightful one-bedroom detached home offers a unique living experience.

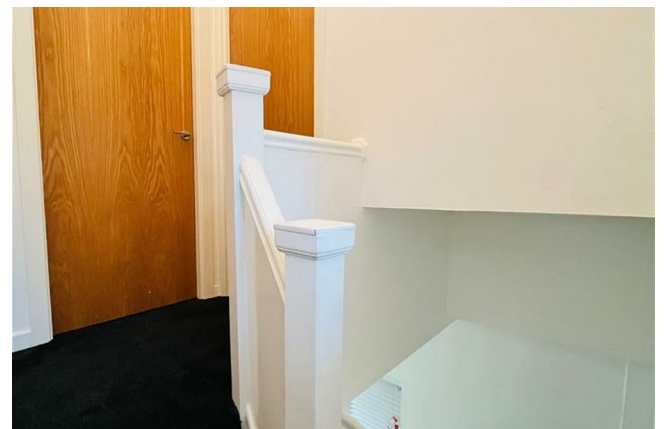
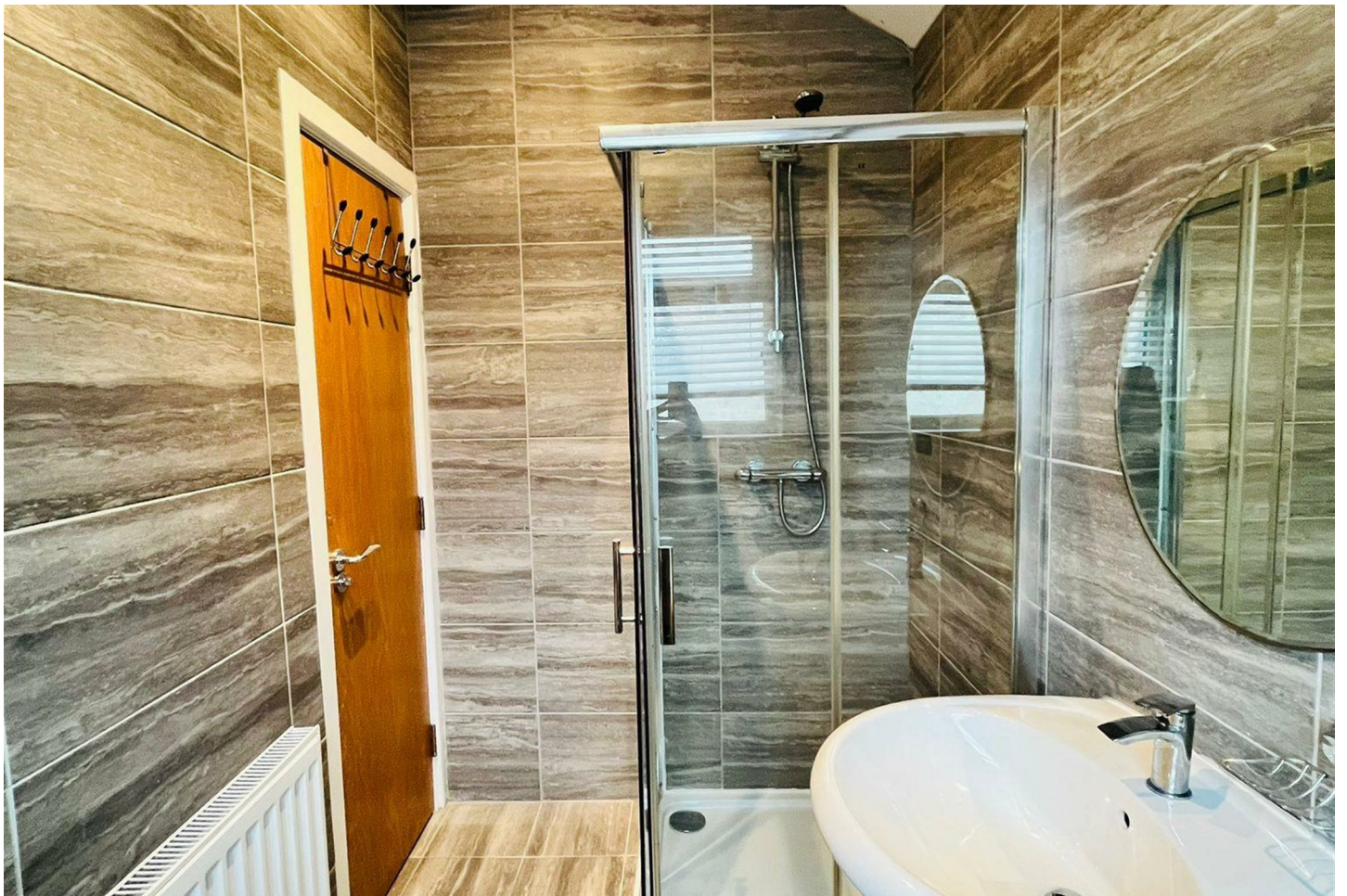
Spanning an area of 495 square feet, this property has been recently refurbished, blending modern comforts with its original character, dating back to 1900. The home features a cosy reception room, perfect for relaxation or entertaining guests. The well-appointed bedroom provides a tranquil retreat, while the en-suite shower room is designed for both functionality and comfort.

The property benefits from gas central heating, ensuring a warm and inviting atmosphere throughout the year. Situated in a popular residential area, this home is conveniently located near the town centre, allowing easy access to local shops, cafes, and amenities. Additionally, secure parking is available, providing peace of mind for residents.

This quirky property is ideal for individuals or couples seeking a charming abode in a vibrant community. With its blend of character and modern updates, this home is a rare find in Lytham St. Annes. Don't miss the opportunity to make it your own.

Council tax band: A

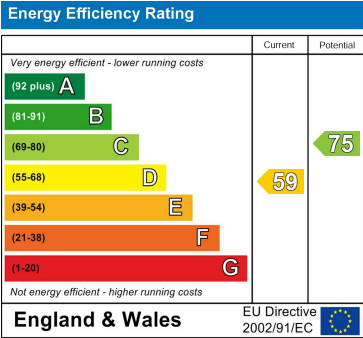




Council Tax Band

A

Energy Performance Graph



Call us on

01253 886444

hello@lsblackpool.com  
lsblackpool.com

Agents Note: Whilst every care has been taken to prepare these particulars, they are for guidance purposes only. All measurements are approximate and are for general guidance purposes only and whilst every care has been taken to ensure their accuracy, they should not be relied upon and potential buyers are advised to recheck the measurements.